

Sea to Shining Sea LIVE Workshop and Technology Transfer November 1-3, 2011 San Diego, California

Homework

Use Google Earth or a park map to mark the places you would like to conduct distance education programs. Identify the locations of Internet availability and NPS radio repeaters on the map (Include GPS coordinates). Draw in lines to connect the proposed LIVE broadcast sites, the repeater sites and the Internet availability sites.

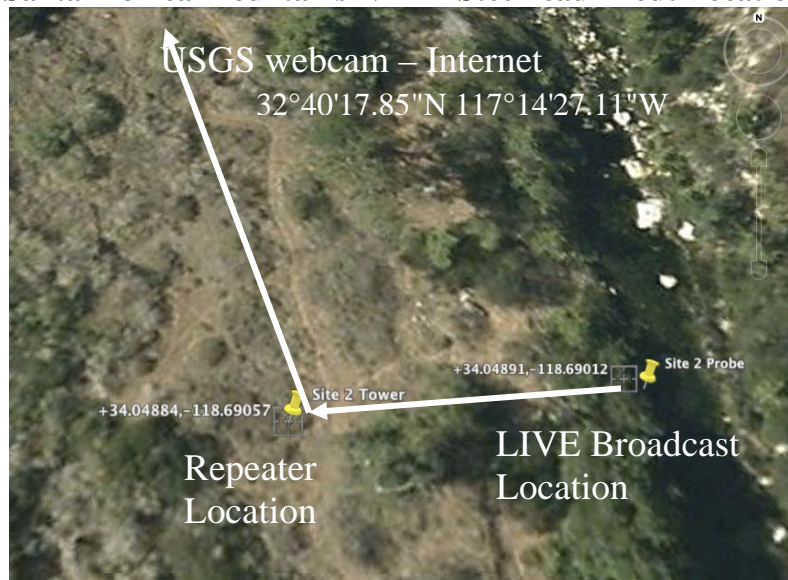
Link the Internet available sites to the sites you would like to broadcast distance education programs by using a line-of-sight method. Line of sight –requires that you be able to see a repeater site from locations with Internet availability – then you can link from repeater to repeater–the final link will be from a repeater to the LIVE broadcast site.

Please see diagrams below for examples.

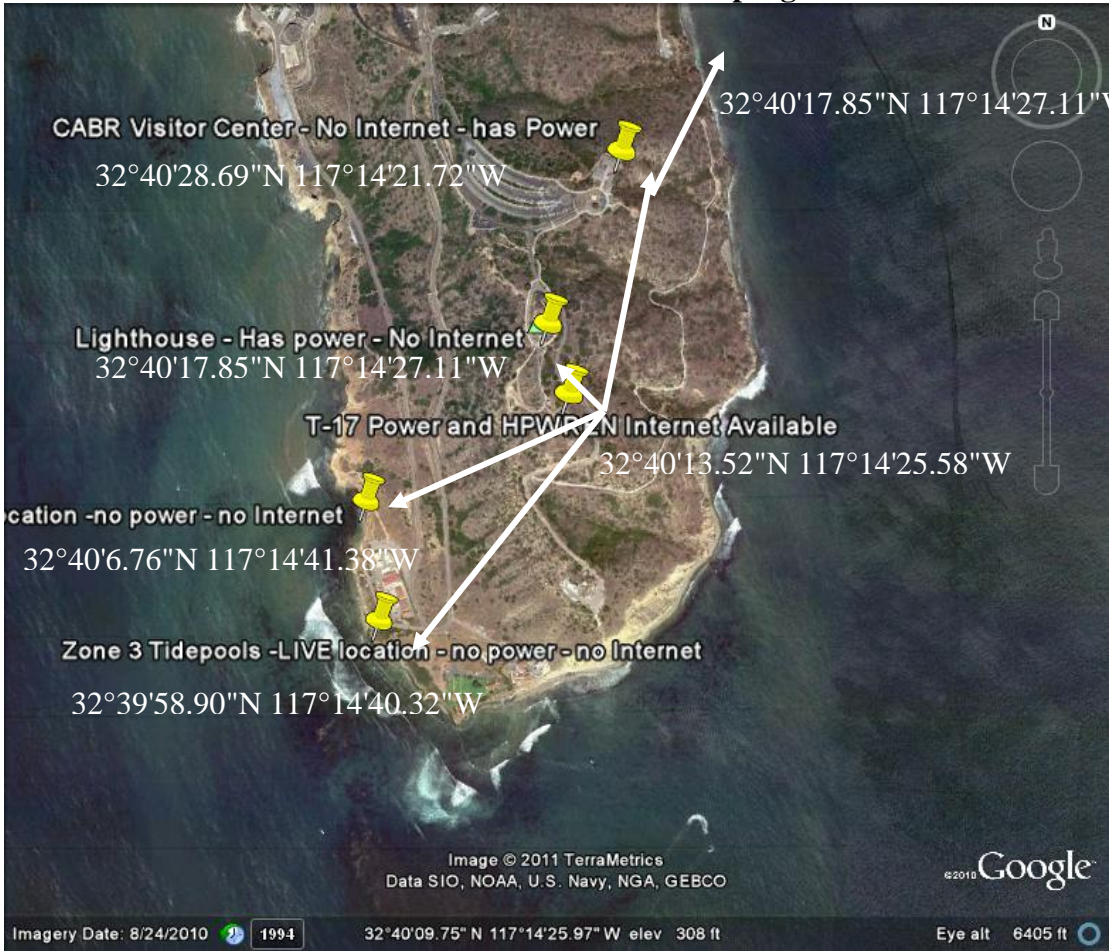
Instructions

- 1) Describe the connectivity or Internet service availability at the location you would like to broadcast LIVE distance education programs. If your location is out in the field and there is not Internet connectivity – please state this and describe the nearest location which has Internet service.
- 2) Identify- insert push-pins (Google Earth) with GPS coordinates at the locations you would like to conduct LIVE distance education programs.
- 3) Identify - insert push-pins (Google Earth) with GPS coordinates of the NPS repeater sites nearest the locations you would like to conduct LIVE distance education programs. You might have to consult your LE communications person for these locations.
- 4) Describe the availability of power at the locations you would like to broadcast. If there is no power available please include this information too.

Santa Monica Mountains NRA – Steelhead Trout Location



Cabrillo National Monument LIVE program sites



Cabrillo HPWREN Network

